

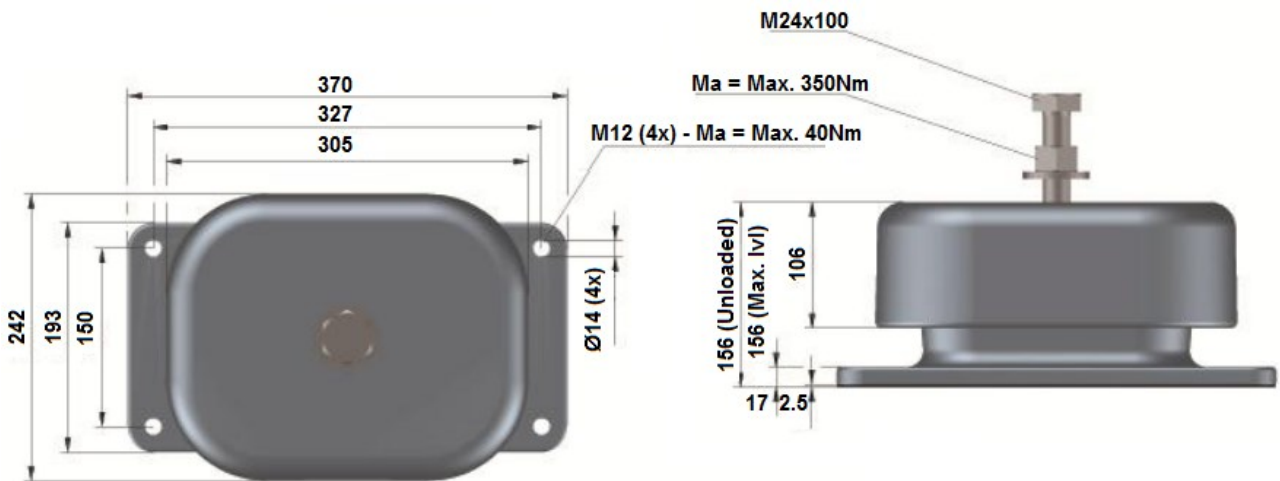
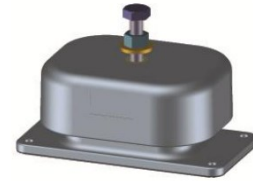
Description:

Vibracoustics Ltd VSM J Type Spring Mountings are a range of durable, fully enclosed rectangular steel spring mountings which are produced as standard with cast aluminium housings. Gun metal housings are also available to special order.

Standard maximum working deflection for all types is 25mm, with optional 50mm internal springs available for certain sizes. Once the mountings are correctly installed, any excessive lateral and upward vertical displacements are snubbed by an internal rubber 'O' ring, which also prevents metal to metal contact.

The mountings are ideal for the installation of slow speed machines and service equipment on upper floor locations.

Please refer to our installation instructions, available upon request.



Load Deflection Characteristics

